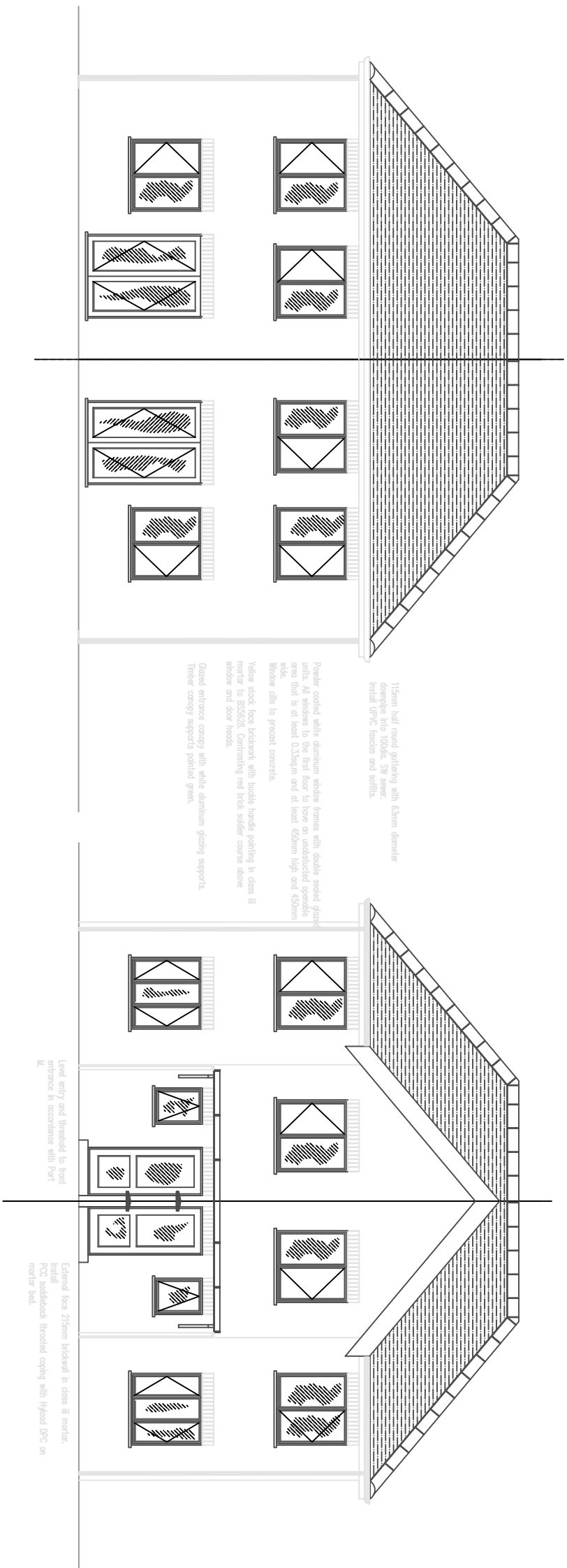


SIDE ELEVATIONS



REAR ELEVATION

FRONT ELEVATION

115mm half round gutters with 63mm diameter downpipes into 100litre SIP water-butted UPVC basins and soffits.

Powder coated white aluminium window frames with double sealed glazing units. All windows to the first floor to have an unobstructed operable area that is at least 0.33sqm and at least 600mm high and 620mm wide.

Yellow abrick finish brickwork with handle handle pointing in class II mortar to BS5201. Contrasting red brick window course above window and door heads.

White tiles to ground concrete.

White canopy supports painted green.

Level entry and threshold to front entrance in accordance with Part M.

External face 215mm brickwork in class II mortar. PCC substrate breasted coping with 150mm GPC on mortar bed.

Rev.	Revisions	Date



Project

Title



Brick

Brickwork

Brickwork

Brickwork

Project No. Fig. No. Rev.